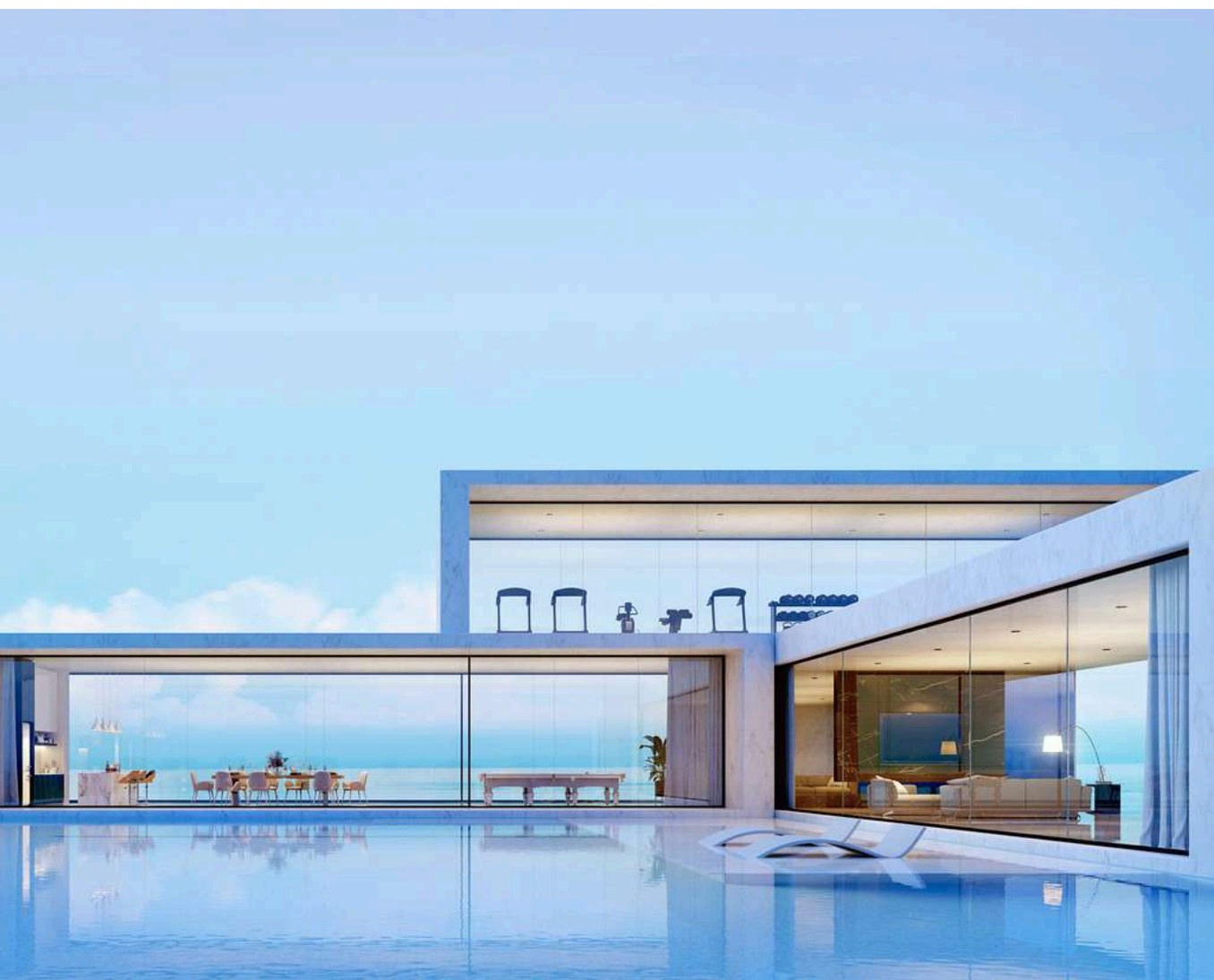

TILCON SA

*special aluminum constructions
& glazing systems*



ABOUT US

Tilcon SA is active in the field of aluminium. The extensive experience that characterizes the company in the field of aluminum and the experienced and qualified staff can tailor custom manufacturing solutions for each project, any special aluminum construction, frames, doors, glazing, pergolas, gladding, made with care and great attention to detail.



We have our own R&D department and a state-of-the-art and automated production with CNC machines, in order to implement all client specifications and requirements, paying special attention to the smallest detail of each construction, with the primary objective of maximum customer satisfaction.

The factory of TILCON SA is located in the industrial area of Nea Raidestos in Thessaloniki, in a facility with advanced manufacturing equipment and design, spanning 2700sq.m., which is continuously upgraded to incorporate the latest technological advancements.

FACILITIES

Our offices, factory and showroom are located in our own premises.

We have vertical production, with the cutting and processing of glass panes, and an organized warehouse department for the management of goods.

We employ six mechanical engineers and a site engineer to supervise all projects.



CERTIFICATIONS



We are committed to the ongoing development of our quality assurance program, enhancing our production processes and products to meet European and international standards.

Through this process, we maintain our competitive advantage, which, in many cases, is a prerequisite for cooperation and a criterion for the selection of our systems.



A brand-new innovative range of minimal sliding frames with extra slim or invisible aluminum profiles, designed and developed to bring superior aesthetics, ultra-wide uninterrupted views, and the utmost living experience into every contemporary space.



Replace

The height of frame of 33mm makes it an ideal solution for the replacement of old frames without extra works and digging. The visible aluminium profile of the sash is 22mm.



Inside out

The vertical profiles are the only visible aluminium profiles of the system.



Invisible

The buried guide, only visible as two lines, provides the possibility of floor extension from the inside out.



Glazing thickness 28-44mm
Manual sheet weight max 400Kg
Electric motor sheet weight 400Kg+
Thermal transmittance coefficient $U_w = 1,38W/m^2 K$ for frame dimensions of 3.60x2.80m and glazing with $U_g = 1,0W/m^2 K$
Waterproofing in accordance with EN 12208:1999-11 / Class: E750
Air permeability in accordance with EN 12207:2016-12 / Class: 4
Resistance to wind load in accordance with EN 12210:2016-03 / Class: C4/B4
Sound reduction in accordance with EN ISO 10140-2: 2021-05, EN ISO 717-1: 2020-12 / $R_w=43dB$



Replacing the glass panels, as well as the accessories is easy and immediate since you don't have to remove the frame!

ALBIO 235

Thermal-break Sliding Systems

Albio 235 is ideal for wide opening applications, having profiles with great endurance and high moment of inertia.



These fittings give the possibility of using large and thick glazing units, with a capacity that can reach up to 250kg sash weight.

Aluminum Alloy:

EN AW 6060T6, EN 15088:2005

Powder coating:

According to the European standard Qualicoat

Anodising:

According to the European standard Qualanod

Tolerance:

EN 12020-2

Gaskets:

EPDM

Glazing Thickness:

24mm & 36mm

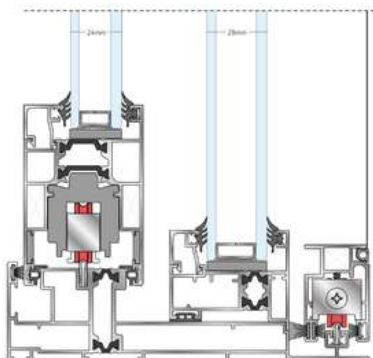
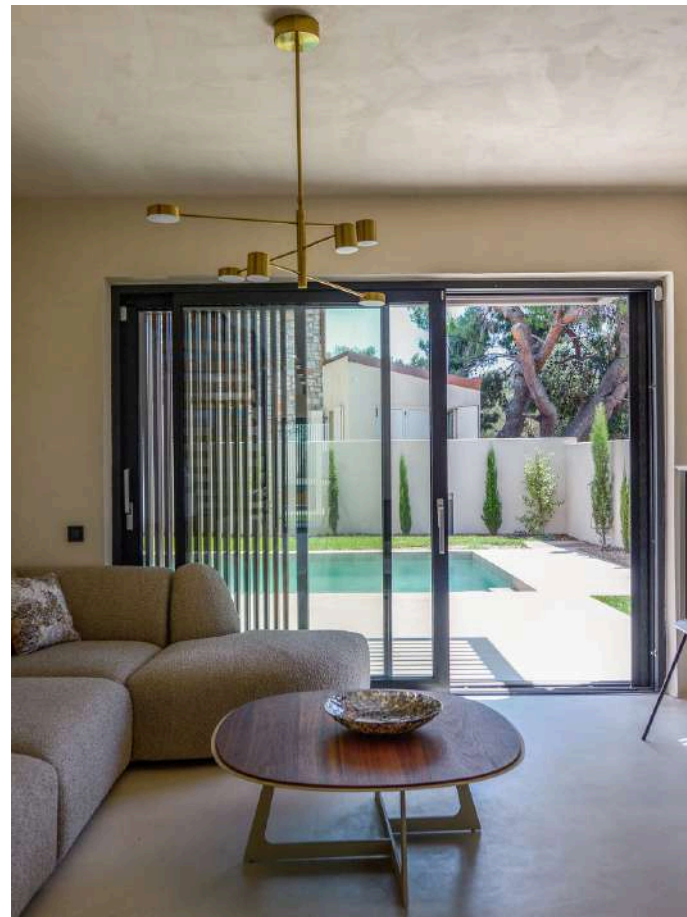
Lift & slide fitting:

GU-937/957

Scroll Guide:

Stainless steel, polyamide

The system presents excellent thermal-insulation properties thanks to the 24-34mm polyamides and special multi-chambered PVC add-ons. Moreover, the system offers water-tightness through EPDM sealing gaskets and its special lift & slide railing mechanism.



Thermal- Break:

12mm, 24mm, 34mm (PA 6.6, 25%GF)

Air Permeability:

Specimen dimensions: 2.10m X 2.20m: Class 4 (EN 1026:2000 / EN 12207:2000)

Thermal transmittance coefficient:

3.6 – 6.8 W/(m²K) (EN 10077-2:2003-10)

Water Tightness:

Specimen dimensions: 2.10m X 2.20m: Class 7A (EN 1027:2000 / EN 12208:2000)

Sash dimensions:

Width 56mm, height 84.5mm

Resistance to wind load:

Specimen dimensions: 2.10m X 2.20m: Class C4 (EN 12211:2000 / EN 12210:2000)

ALBIO 129C

Thermal-break Opening Systems

Albio 129C Advanced is the only system having a sash with a width of 78,3mm that presents high thermal-insulation properties with $U_f=1,48$ $U_g= 1,0$ $W/(m^2K)$ and $U_w=1,4$ $U_g= 1,0$ $W/(m^2K)$, thanks to the use of special polyamides.



It has been used a special water tightness component that replaces the central sealing gasket and offers a better thermal insulation ability.

The design of the system with minimal straight lines offers a minimalistic look and an improved aesthetics. Furthermore, there is the possibility to use a frame that is coplanar not only at the outside but in the inside too.

Aluminium Alloy by AlMgSi 0,5 F22, according to EN-6060
Profile's mechanical resistance according to EN 755-2
Frame dimensions: 69mm to 185mm width and 55mm height.

Sash dimensions: 78mm width, and 82mm to 105mm height.

Tolerance dimensions according to EN 755-9 ή 12020-2.

Sealing with central EPDM gasket and two semi-foam gaskets for inner-outer sealing.

Glass panel thickness from 16mm to 46mm.



ALBIO 127C

SUPERTHERMO

Thermal-break Opening Systems

Albio 127C Super Thermo is a new opening tilt and turn system with special polyamides, which enables the creation of exceptionally stylish frames without visible sashes. The system allows the installation of perimeter multi- locking mechanism offering the greatest security.

Aluminum Alloy:

EN AW 6060T6, EN 15088:2005

Powder coating:

According to the European standard Qualicoat

Anodising:

According to the European standard Qualanod

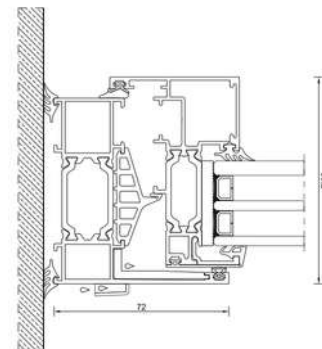
Tolerance: EN 12020-2

Gaskets: EPDM / EPDM Foam

Chamber:

Compatible with multiple locking mechanisms

Glazing Thickness: 35mm



Thermal- Break: 34mm (PA 6.6, 25%GF)

Air Permeability:

Specimen dimensions: 1.40m X 1.40m : Class 4 (EN 12207:1999-11)

Water Tightness:

Specimen dimensions: 1.40m X 1.40m : Class E900 (EN 12208:1999-11)

Frame dimensions:

Width 76,5mm, height 72mm

Sash dimensions:

Width 77,3mm, height 53,3mm

Resistance to wind load:

Specimen dimensions: 1.40m X 1.40m : Class C4/B4 (EN 12210:1999-11/AC:2002-08)

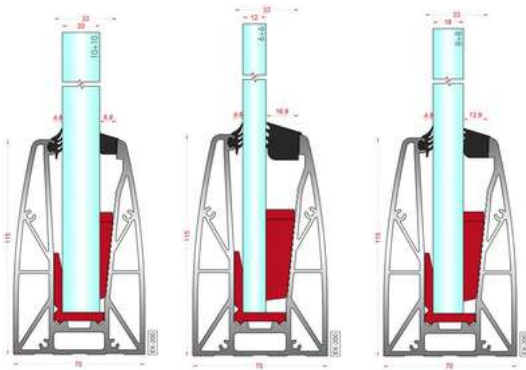
EX-200

Vertical Glass Support System

The new EX-200 glass floor support base is made entirely of aluminium and it is suitable for construction of a glass railing on a finished floor or parapet.

It consists of a one-piece profile for better support and perfect alignment of the system. It is certified and distinguished for easy and fast installation.

EX-200



Modern design with endless visual field of freedom that offers the ultimate view.

Quick and easy installation due to the unique profile.

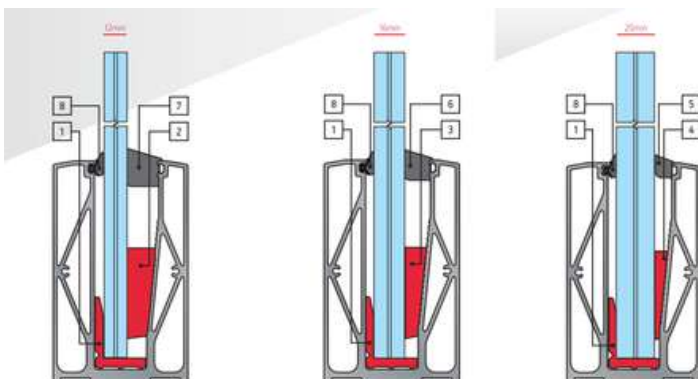
Easy glass replacement without damage to the system.

Ability to choose RAL colors, anodizing, INOX imitation and wood imitation.

The EX-200 glass railing is available in 2 profiles, oval with code EX200 and equal profile with code EX148. The system accepts vertical glass 12mm, 16mm, 20mm thick and up to 1100mm high.

It is ideal for creating partitions both outdoors and indoors, such as balconies, stairs, etc.

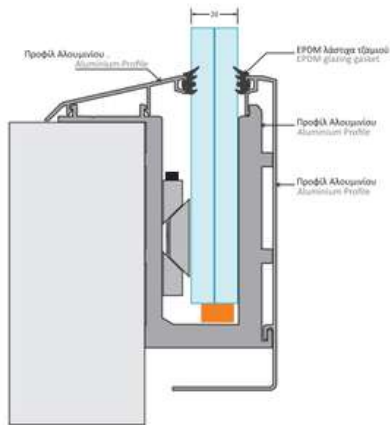
EX-148



SERIES 400

Lateral vertical system
floor support for glazed floor

Lateral glazing support system with a special feature of enriching unobstructed views and providing large surface areas in high-level projects and buildings. Sense of stability and strength



The glass floor support base is covered with aluminium caps of oval cross-section and allows easy removal in case of replacement of the glass pane, without causing damage to the floor or the system itself. The caps are available in a wide range of colours, in special colours, anodised inox as well as in wood imitation shades.

Unobstructed View:

Provide a clear and unobstructed view thanks to the discreet support of the glass panes.

Ideal for places where the view is important (hotels, luxury homes, offices).

Large glass surfaces:

Possibility of installing large glass panes without dividers. Create bright and spacious spaces with a modern aesthetic.

Aesthetics and Functionality:

Elegant design that enhances the architecture of the buildings. Minimize visual barriers, offering a modern appearance.

Minimising the visual impact, minimizing the visual impact and creating a minimalist appearance, while providing a minimalist appearance with a modern design:

Durable system that responds to extreme weather conditions. Ensuring high safety standards without compromising aesthetics.

Reduced Maintenance Requirements:

Use of high-tech materials that require minimal maintenance. Long-term cost-effective performance, with fewer repair or replacement needs.

Ideal for high-level projects

Suitable for high-end architectural applications.

Combines functionality, safety and aesthetics for high-end projects.



PERGOLA BIOCLIMATIC

**Bioclimatic aluminium pergola system
with rotating louvers**

Pergola BIOCLIMATIC - C is an innovative shading system with rotating louvers. It is entirely made of aluminium and offers protection from sunlight on sunny days as well as from rainwater or snow through its special drainage system.



The modern design in combination with the variety of colors that we provide as well as the possibility of adding different automated systems (LED lighting, rain, wind and snow sensors, etc.) makes Exalco Pergola an ideal solution to cover outdoor and semi-outdoor spaces in houses, hotel facilities, restaurants and cafés.

Specifically studied and designed in a way to absorb any noise that might be caused during the movement of the louvers. This happens thanks to the use of a motorized system that permits the free movement of the louvers.

This is due to the use of special components, such as motors and tires, that allow the blinds to move freely and close quietly.

The movement of the blinds can be electrically adjusted from 0° to 100° to allow the full exploitation of the pergola in all weather conditions and to achieve the desired sunshine or air flow.

The motorized system is situated in the interior part of the beam to ensure that it will not be visible. In addition, thanks to the use of a gasket between the louvers, the noise provoked from the louver's closing is prevented.

Moreover, at the flank of the louvers a brush is situated on the beam which not only absorbs the noise provoked from the louver's movement but also prevents the sunlight from entering when the louver is closed.

Possibility to choose from a variety of automated systems:

- LED lighting
- Rain or wind sensor
- Infrared heating
- Transmitter and central control
- Music and audio control system through bluetooth
- Smartphone control
- Temperature sensor
- Snow sensor



ALBIO SOLAR 200

Shading system with fixed louvers

Albio Solar 200 is a complete system used for external solar shading of buildings, utilizing fixed aluminium louvers. The system includes a range of louver profiles, as well as profiles used for setting the louvers in position on the external side of the glass surface. Special accessories guarantee precision and ease of construction.

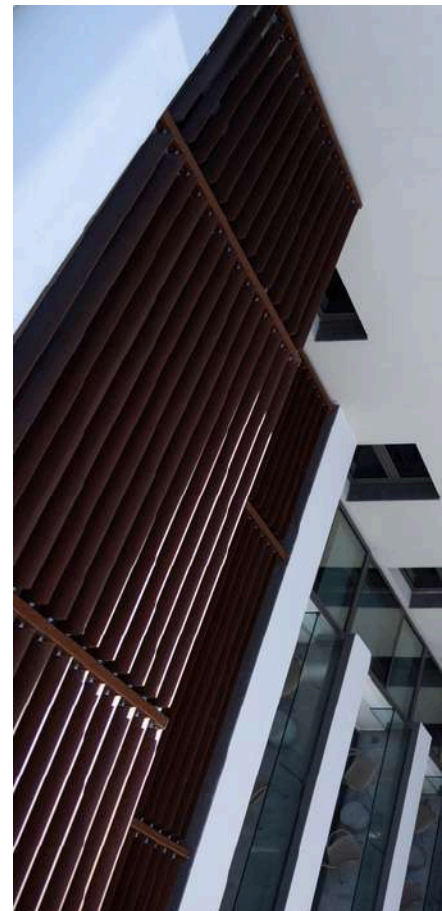


For external shading with fixed louvers, in horizontal or cantilevered arrangement, Solar 200 can fully cover a range of applications on this typology of solar louvers.

The profile surface can be either anodised or powder-coated. Anodising improves aluminum profiles' durability. Light-coloured profiles are preferable since there is the reduction of solar glare and solar heat gain.

SOLAR 200 consists of aluminium louver profiles type L and Oval that are suitable for fixed solar shading, and a series of auxiliary profiles.

Aluminum Alloy: EN AW 6063T6, EN 15088:2005
Powder coating: According to the European standard Qualicoat
Anodising: According to the European standard Qualanod
Tolerance: EN 12020-2
Fin dimensions: 100mm
Anodizing Thickness: 10 to 20 µm
Maximum span: 1.2m



Albio Solar 100 is a complete system used for external solar shading of buildings, utilizing fin-shaped aluminum profiles.

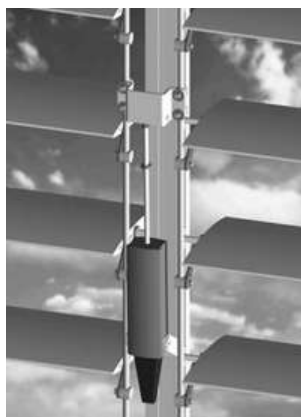
The system includes a range of fin profiles, as well as profiles used for setting the fins in position on the external side of the glass surface.



A full range of accessories guarantees precision and ease of construction on any application and mechanisms for rotation control of the fins and remote control.

The system integrates seamlessly with all Exalco curtain-wall systems, enabling extensive design versatility for building facades.

SOLAR 100 consists of aluminium fin profiles offering fin width from 180mm to 610mm. In addition, the system contains a series of auxiliary profiles which are essential for the assembly of the system and includes the necessary accessories and equipment in the case of automatic solar shading installation



Aluminum Alloy:EN AW 6063T6, EN 15088:2005

Powder coating:According to the European standard Qualicoat

Anodising:According to the European standard Qualanod

Tolerance:EN 12020-2

Fin dimensions:180 X 30mm, 310 X 40mm, 460 X 40 mm, 610 X 40mm

Anodizing Thickness:10 to 20 µm

Maximum span:3m (180mm), 4m (310mm, 460mm, 610mm)

ALBIO 133 FOLDI

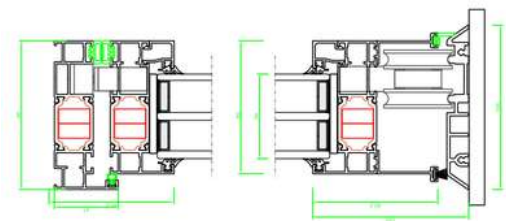
Thermal-break folding doors system

Albio 133 Foldi stands out for its minimal appearance with a visible surface of each sheet of only 41mm, the possibility of manufacturing large sheets up to 0.90 m wide and up to 2.50m high as well as for the ease of rolling with silent operation for weight application. up to 70 kg per roll.



Every required typology (corner, standard, structural) is available, giving the possibility to open leaves towards the outside as well as the inside space by scrolling on the lower or upper guide of the system to cover every requirement of the application area.

In addition, it provides highly thermal insulation performance using 34 mm wide polyamides and thermal insulation rods. The maximum glass thickness is up to 70mm in order to cover every requirement for thermal insulation and sound reduction.



Minimal design:
visible surface of each sheet only 41mm, giving elegance.

Sheet sizes.

Silent rolling: Roller mechanisms and hinges ensure quiet and easy operation for sheets weighing up to 70kg.

Flexible typologies:

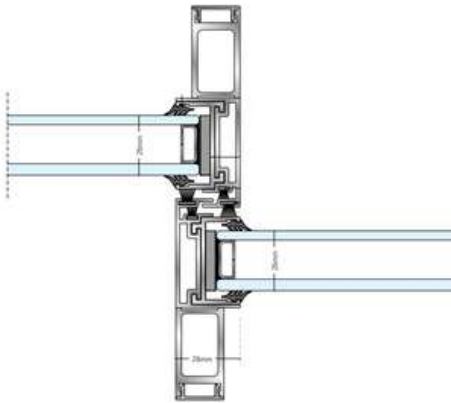
Available in standard and structural, for opening to indoor and outdoor areas.



ALBIO 225 SLIM

Thermal-break Sliding Systems

The usual functions of a sliding system are now upgraded with the introduction of Exalco's new slide - lift and slide insulated system, Albio 225 Slim.



The modern and innovative design of the new system both in terms of aesthetics and functionality make it ideal for a multitude of applications, always in line with the latest architectural trends and the minimal design with elegant and straight lines while the visible aluminum in the overlap is just 28 mm.

At the same time, it can be used for the construction of a multitude of configurations both for sliding and lift & slide typologies with the use of gaskets, thus achieving excellent waterproof results while the maximum sash weight can go up to 250kg.

Finally, the use of 24mm & 20mm wide polyamide rods contribute to the reduction of thermal losses of the system, leading to excellent thermal insulation results.



Minimal design:
visible surface of each sheet only 41mm, giving elegance.

Sheet sizes.
Silent rolling: Roller mechanisms and hinges ensure quiet and easy operation for sheets weighing up to 70kg.

Flexible typologies:
Available in standard and structural, for opening to indoor and outdoor areas.

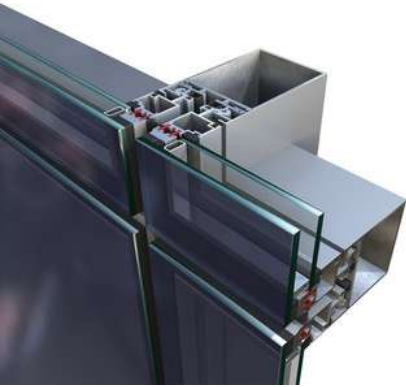


ALBIO 102

Curtain-Wall Systems

Albio 102 semi structural curtain wall system creates a 12mm interval between the frames. Its basic characteristic is that there are no bolt keepers on the transoms of the glazing panels.

The transoms can become projecting fast and easy any time, or on any panel chosen, by simply setting a handle on the window even after the construction phase, with no additional cost.



Aluminum Alloy:
EN AW 6063T6, EN 15088:2005

Powder coating:
According to the European standard Qualicoat

Anodising:
According to the European standard Qualanod

Tolerance: EN 12020-2

Gaskets: EPDM

Glazing Thickness: 20mm

Air Permeability:
Class AE – projected frame:4 (EN 12152)

Water Tightness:

Static: Class RE 1500 – projected frame: E1500 (EN 12154), Dynamic:
188Pa/563Pa – projected frame:npd (EN 13050)

Column Dimension:

Width 71.6mm, height 60.75-142mm

Transom dimension:

Width 71.6mm, height 53-113mm

Impact resistance:

I5/E5 – projected frame:npd (EN 14019)

Resistance to wind load:

Design payload: ± 1.5 KN/m² – projected frame:npd (EN 13116), Safety
payload: ± 2.25 KN/m² – projected frame:npd (EN 13116)



ALBIO R50

Curtain-Wall Systems

Albio R50 is a high performance curtain-wall system, which is available in two versions. A standard type with pressure plate / cover caps and a structural glazing type both providing classic style and capability to design several kinds of structures like buildings' vertical facades and skylights.



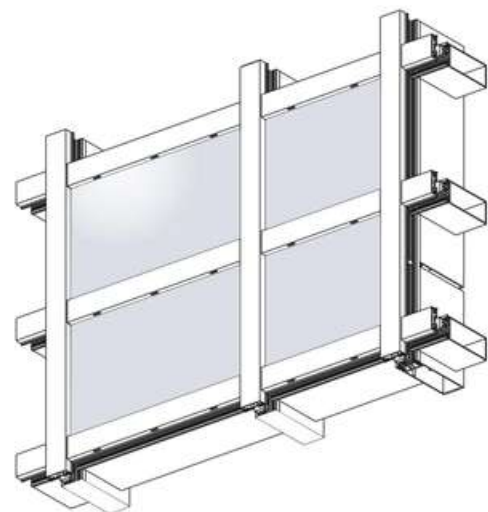
Albio R50 provides ease of manufacture as well as various options for the decorative face cup profile. With 50mm of visible profile width, the system allows application of infills of 4mm to 50mm thickness.

The mullion profiles cover a wide range static requirement with moment of inertia between 6.7 to 1115.8cm⁴. In cases where requirements are higher, the system offers a range of additional support profiles and can provide up to 1351cm⁴.

The system has a self-bearing structure, composed of 50 mm wide aluminium mullions and transoms.

Depending on the division pattern and external loads, the system provides a wide range of mullions and transoms varying in depth, with the moment of inertia $I_x=58-1115 \text{ cm}^4$.

All mullions may be additionally strengthened by applying special internal aluminium profiles. The mullion-transom connection has masking strips to enable a proper water drainage and ventilation.



In order to achieve optimal thermal and acoustic insulation performance there has been applied in the system a continuous thermal break called "Nomaflex/ NOMATEC XPE" with good insulating parameters and profiled EPDM glazing gaskets.

It allows to obtain proper insulation 2 class for thermal performance $U_f=1,67-1,88 \text{ W/m}^2 \text{ K}$, and it also allows for application of infills of thickness varying from 4 to 50 mm.

Divibox Minimal and Divibox Smart systems are complete and flexible solutions, to meet the high design standards of modern interiors. The minimal design lines of the profiles organize the spaces, add modern aesthetics and meet the high requirements of modern interiors.



MINIMAL CHARACTERISTICS

Guide - base aluminium profile with a visible height of 40mm and width of 33,5mm

Mullion - base aluminium profile with a visible height of 30mm and width of 50mm

Aluminium door profile with a visible height of 40mm and width of 50mm

Installation of a single glass of 10mm
Construction of various typologies (straight, "T", etc.)

Possibility of choosing a door with or without an aluminium profile around the perimeter

Sound reduction certification: stable value 39dB -
Door sash: 33dB



High sound reduction efficiency and the possibility of double or single glazing give the system maximum energy savings.

They can be applied to office buildings, meeting rooms, or many other cases, composing a functional and modern business space.

Simple and straight lines of aluminium systems of minimal design, which organize the office spaces with high aesthetics without any aluminium volume.

Possibility of constructing various typologies (corner, "T", straight)

Possibility of long lengths and heights of construction

High sound reduction performance, creating appropriate working spaces. Installation of single and double glass in small-size aluminium systems to achieve maximum energy saving, desirable acoustics and light distribution within the interior space.

SMART CHARACTERISTICS

Base profile - aluminium guide/mullion with a visible height of 50mm and width of 104mm

Installation of double glass of 10 +10mm and of single glass of 10mm

Construction of a single or double sash door with a height of up to 3m

Possibility of installation of shading rollers internally, in the gap of the double glass

Possibility of combination of filling materials, e.g. melamine

Possibility of installation of a horizontal beam

Sound reduction certification: stable value: 46dB -
Door sash: 40dB

CONCEPSYSTEM 77-FP

Fireproof Door System

The extended range of approved ConceptSystem 77-FP flush doors is available for all inward and outward opening types.

This is realised with a full range of door locks and hinges to meet every kind of locking demand, including fully integrated solutions in building management systems.

Both single and double leaf doors are available up to a maximum door leaf size of 1300 by 2750mm (and under specific conditions even higher), and can be combined with fixed glazing.



Thermal insulation (Best) – $U_f 1.8 \text{ W/m}^2\text{K}$
Thermal insulation – $U_w 1.4 \text{ W/M}^2\text{k}$
Air tightness Class 4 (600Pa)
Water tightness Class 7A (300Pa)
Wind load resistance Class C2 (800Pa)
Acoustics – $R_w(C;Ctr) 42(-1;-4) \text{ dB}$
Durability Class 8 (1000000 cycles)
Burglar resistance RC2 RC3
PAS 24
Impact resistance I5/E5 Fire resistance $EI_1 30$
 $EI_2 30$
 $EI_2 60$ EW 30
Bullet resistance
FB4
FSG
FB6
Kalashnikov



* Performances and properties depend on size, profile combinations, hardware and infill choices



FOLDING SHADING SYSTEM

Folding shading systems are one of the most modern and flexible shading solutions for indoor and outdoor areas. They offer a range of functions and advantages, which make them an ideal choice for residential, hotel and public buildings.

They protect large openings from excessive sun exposure and unwanted stares, while also composing the look.

One of the main advantages of aluminium folding systems is their ability to save space. When fully opened, the panels stack neatly behind each other, creating a wide and unobstructed opening.

Adaptability: One of the key features of the bubble is the ability to adapt to different sizes and opening shapes, covering everything from small windows to large surfaces such as terraces and balconies.

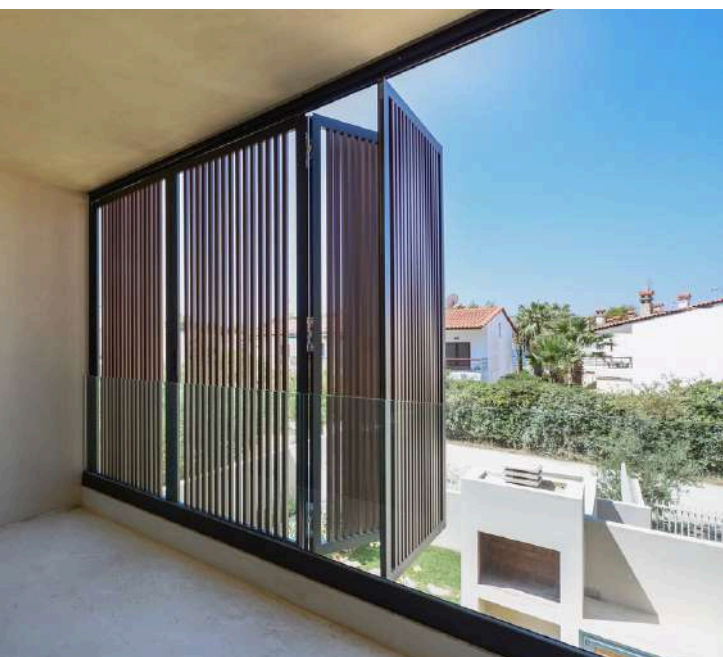
Full or partial shading: the system allows easy adjustment of the shading according to the intensity of the light or the time of day. In this way, the user can have full control over the natural brightness of his/her room.

Energy saving: By reducing direct exposure to the sun, retractable shading systems help reduce the temperature inside buildings, thus reducing the need for air conditioning in the summer months. Similarly, in winter they can be used to reduce heat loss.

Aesthetic improvement: The variety of designs, colours and materials available for bubble shading systems make them ideal for any type of architecture and decoration, bringing elegance and a modern look to the space.



*There is also an constructing option in sliding



Protection from the weather: Folding systems provide protection from sun, rain and wind, allowing outdoor use throughout the year. In this way, outdoor areas can be used comfortably even in the harshest weather conditions.

Easy installation and maintenance: Folding shade systems are relatively easy to maintain, requiring no special tools or expertise. The durability of the materials and modern technologies offer a long lifespan with minimal maintenance.

Versatility: In addition to their use for shading, retractable systems can provide privacy in outdoor spaces.

HOTELIA DOOR

Entrance thermal- break opening system

Hotelia Door is a main entrance door system with thermal-break, ideal for high spec structures with blind panels, glass or a combination among these materials.



Sheet width: 60mm

Profile for internal aluminium handle with many lighting possibilities

The handle can be mounted vertically or horizontally



It is suitable for applications where daily use is a demand such hotels and houses. With total panel thickness of 60mm the door provides high thermal and sound insulation.

Custom design according to client's preference can be created on aluminium and glass surfaces. Manual, electric and especially electronic locks with card for hotels can be installed.



Thermal- Break:
18mm, 19mm (PA 6.6, 25%GF)

Thermal transmittance coefficient:
1.00 W/(m²K) (EN 10077-2:2003-10)

Weighted sound reduction index:
41dB (EN 717-1:2013)

PREMIUM DOOR

Entrance thermal- break opening system

The new aluminium system for premium security door. It's a pioneer at European standards, which sets high standards for any new construction or renovation building. Premium Door has the higher thermal insulation with $U_d = 0,6 \text{ w/m}^2\text{K}$ and offers unprecedented insulating performance both in cold or hot climates.



It provides complete sealing against water or air and ensures maximum protection, thanks to its locking mechanism. It supports any kind of technological system, including installing fingerprint recognition mechanism, opening with introduction of digital code, etc.



The luxury design of Premium Door enables various combinations of materials and colors. Glass combined with aluminium INOX, aluminium in wood color combined with monochrome gloss or textured surface, are some of the choices that are readily available.



Thermal- Break:
22mm, 24mm (PA 6.6, 25% GF)

Air Permeability: Class 4

Thermal transmittance coefficient:
 $0.70 \text{ W}/(\text{m}^2\text{K})$ (EN 10077-2:2003-10)

Water Tightness: Class 3A

Weighted sound reduction index:
 $R_w = 42\text{dB}$ (EN 717-1:2013)

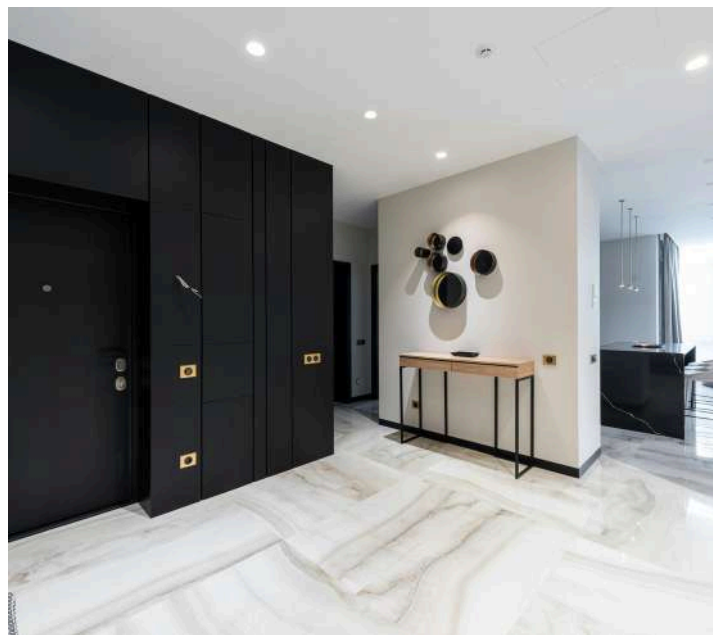
Resistance to wind load:
Class C4/B4

Tildoor is a thermal break entry system, ideal for high specification constructions with panels or glazing in a variety of typologies.

Durability and Safety: the robust structure of the Tildoor range ensures durability and increased safety, making it ideal for areas with heavy traffic or high safety requirements.

Tildoor's high traffic density and high traffic density make it a strong and durable choice for high traffic density and high traffic safety: Available in multiple design, color and finish options, allowing for complete customization to meet the aesthetic and functional needs of any project.

Weather Resistance: The system is designed to provide excellent resistance to extreme weather conditions, offering watertightness and protection against moisture, wind and temperature fluctuations.



Energy Efficiency: with advanced thermal break, the Tildoor range helps to reduce energy consumption by keeping the indoor temperature stable and reducing heat loss.

Easy Maintenance: High-quality materials and low-maintenance construction ensure long-term system performance without frequent repairs or upgrades.

Smooth Operation: The Tildoor series mechanisms offer smooth and quiet operation, even after multiple daily uses.

High Aesthetics: The combination of timeless design and contemporary aesthetics enhances the appearance of any building, whether residential or commercial.



CLADDING SYSTEM

Aluminium Wall and Ceiling Cladding

Cladding system is the ideal proposal for timeless masonry and roof cladding constructions, suitable for use on both the interior and exterior surfaces of buildings, aiming at their excellent aesthetics and high durability over time.



It is an ideal aluminium system that stands out for its ability to cover very large surfaces in commercial, industrial, health, leisure and office buildings, as well as residential buildings, creating varied and impressive facades.



Application in all constructions & personalization, thanks to the variety of profiles and colors.

The finish of the profiles can be chosen between anodizing, a variety of electrostatic paint colours (RAL) or wood imitation in different shades.

Excellent aesthetic effect, which is integrated into the architectural design of the building.

Resistance to weather conditions.

Invisible support connections.

Easy to handle and easy to build, saving time.

Possibility to overlap entire buildings with metal frame or conventional reinforced concrete frame.

Combined with the insulation materials of the external masonry.





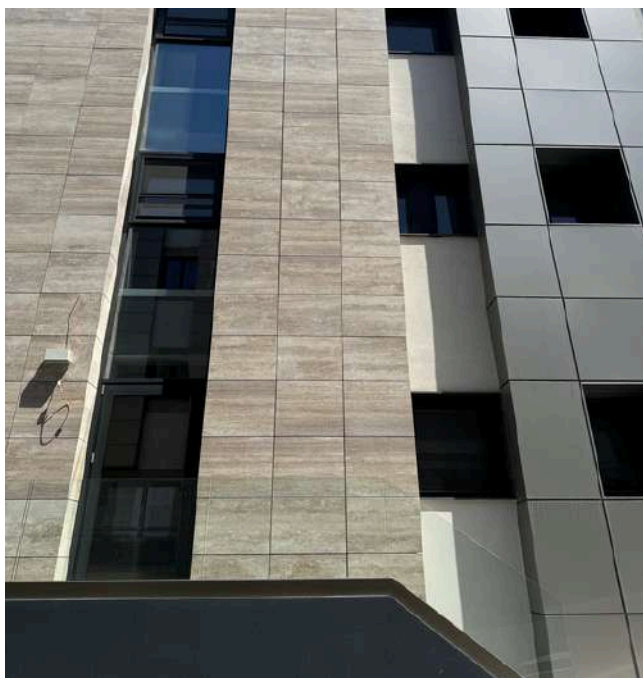
OUR PROJECTS



Anassa Boutique Nikiti



Portes Lithos Luxury Resort Nea Moudania



White Dreams Rhodes

Ag. Loukas Clinic

Sani Verde Hotel





OUR PROJECTS



Bohemia Luxury Living Chanioti



Pefki Deluxe Residences Cassandra



Aelia Luxury Apartments Nikiti



Agnes Deluxe Hotel Pefkohori

Aristotle College





OUR PROJECTS



Portes Lithos Luxury Resort Nea Moudania



Cyprotel Rhodes



Vergos Hotel Vourvourou



Monasty The Autograph Collection Thessaloniki



Olea Villas Nikiti



OUR PROJECTS



Zelia Resort & Spa Chalkidiki



Public municipal library Thessaloniki

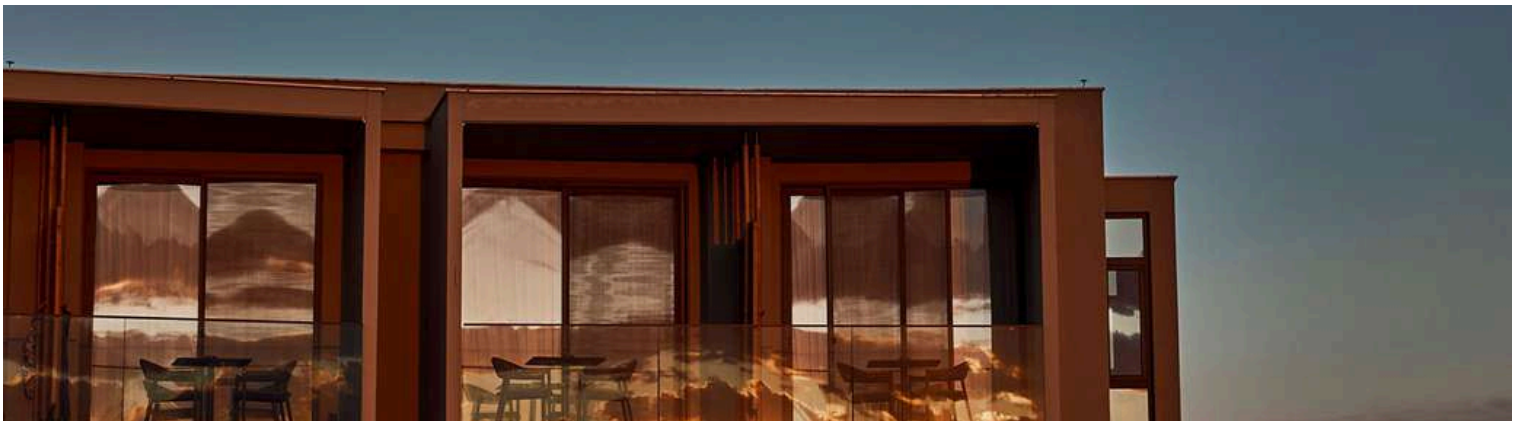


FLBA Filter

Primary Schools



Zelia Resort & Spa Chalkidiki





OUR PROJECTS



Crystal Villas & Suites Polyhrono



Akrogiali Exclusive Hotel Polyhrono



Mango Resort, Sarande Albania



Monasty The Autograph Collection Thessaloniki



Poseidon Resort Neos Marmaras





OUR PROJECTS



Primary School



Paggiao Municipality Town Hall



KUEHNE + NAGEL A.E. - Atrina Center Thessaloniki



Heraclia Luxury Suites



Pefki Deluxe Residences



Evangelismos Clinic

Monasty, The Autograph Collection



CONTACT



+30 2310 465 828



info@tilcon.gr



www.tilcon.gr



Factory & Showroom

Ind. area of Redestos, Thessaloniki
570 01



scan & visit our page